

outside Diameter:
Min : 17.5"
Max : 18"

Pitch:
Min : 2.4"
Max : 2.75"



SC-150375-1
15" (375mm)

SCALE: 1:10

SHEET 4 OF 5

DRAWN: DENIS NADON
EMPLACEMENT:

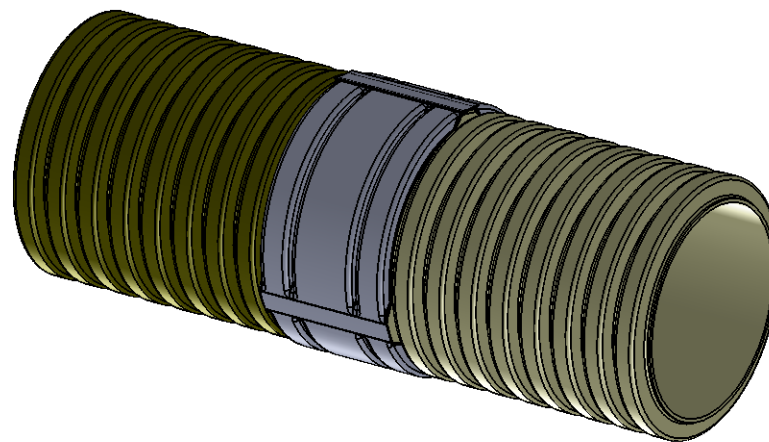
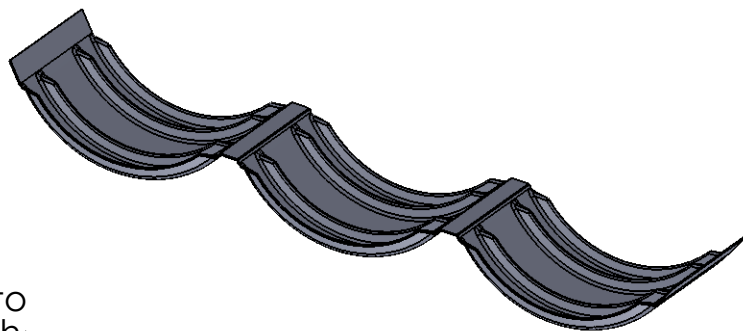
DATE DE RÉVISION: 25 septembre 2014 13:05:42

Certificate of quality.

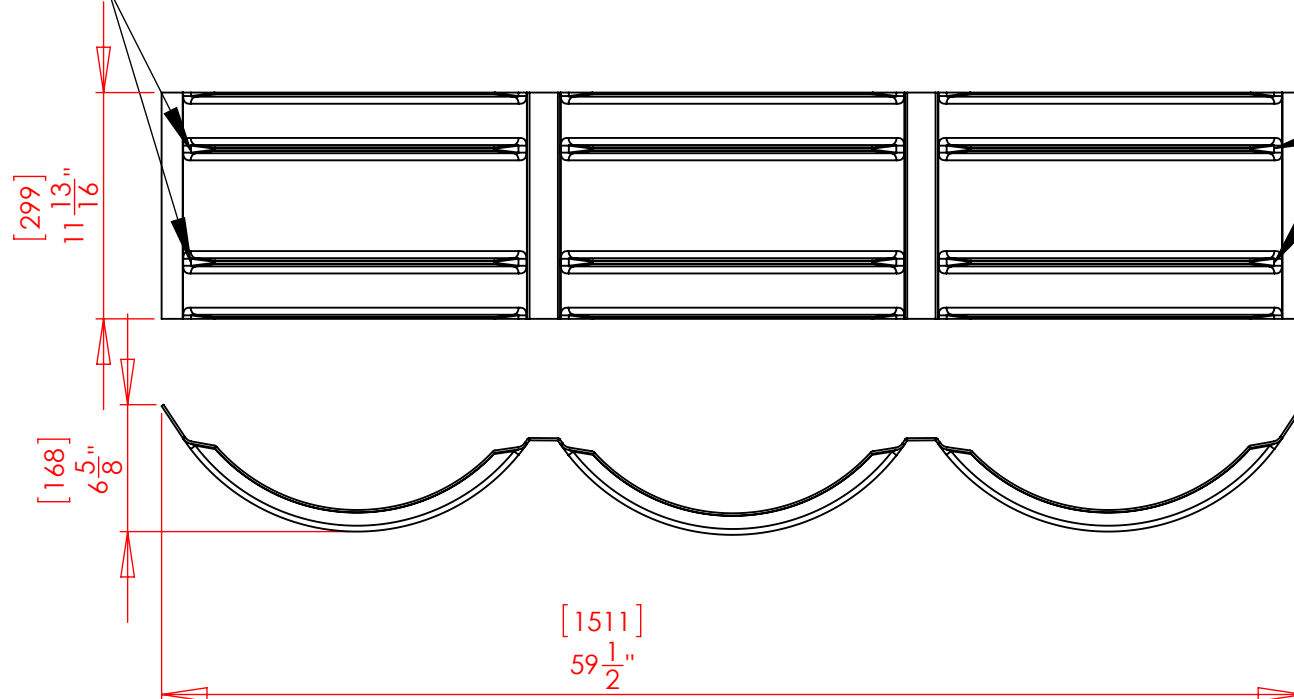
Each parts are designed with **virgin HMWPE black smooth sheets** extruded by Folia Plastics for Qualiplast were produced with either **Formosa Resin HL 5010** or **Novapol NP-Y-353A** and contained **3% carbon black**. All parts are free of defect.

PROPRIETARY AND CONFIDENTIAL

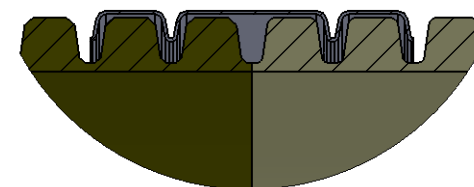
THE INFORMATION CONTAINED IN THIS DRAWING IS THE SOLE PROPERTY OF PLASTIQUE QUALIPLAST. ANY REPRODUCTION IN PART OR AS A WHOLE WITHOUT THE WRITTEN PERMISSION OF PLASTIQUE QUALIPLAST IS PROHIBITED.



Hole to attach



Hole to attach



outside Diameter:
Min : 20.7"
Max : 21.6"

Pitch:
Min : 2.7"
Max : 3.15"



SC-180450-1
18" (450mm)

DRAWN: DENIS NADON
EMPLACEMENT:

DATE DE RÉVISION: 21 octobre 2014 13:34:44

SCALE: 1:10

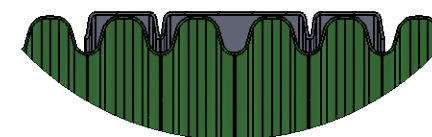
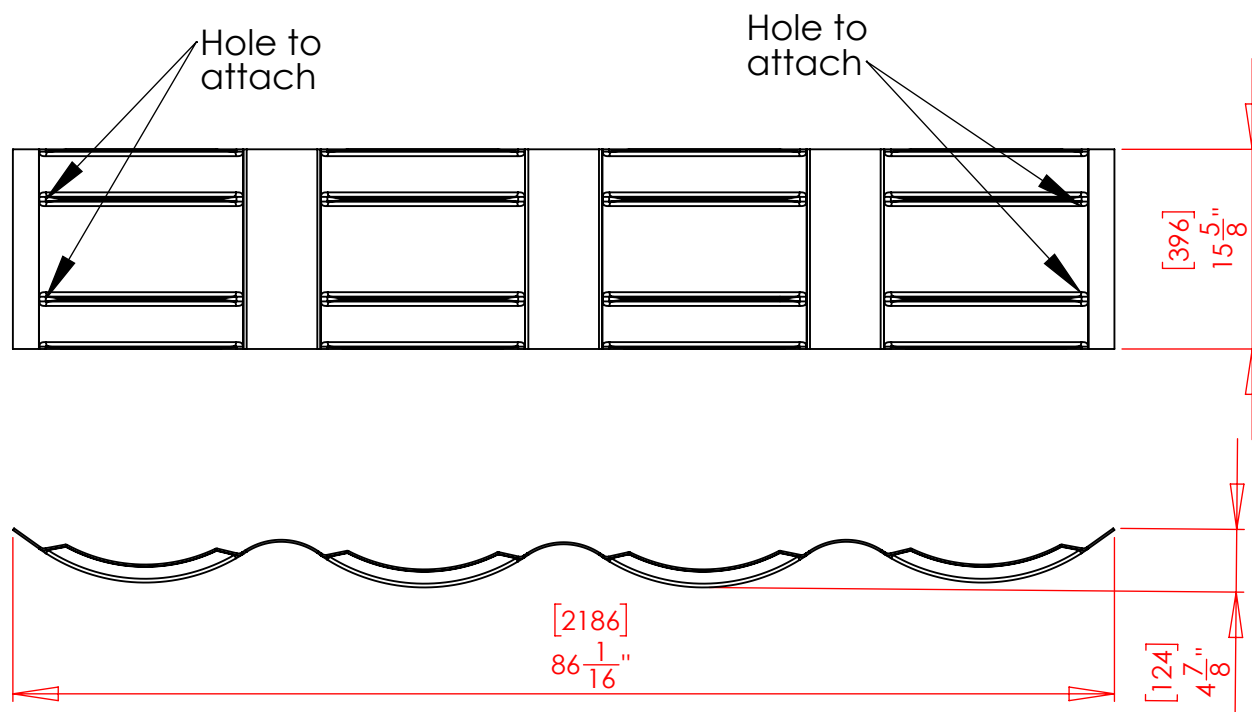
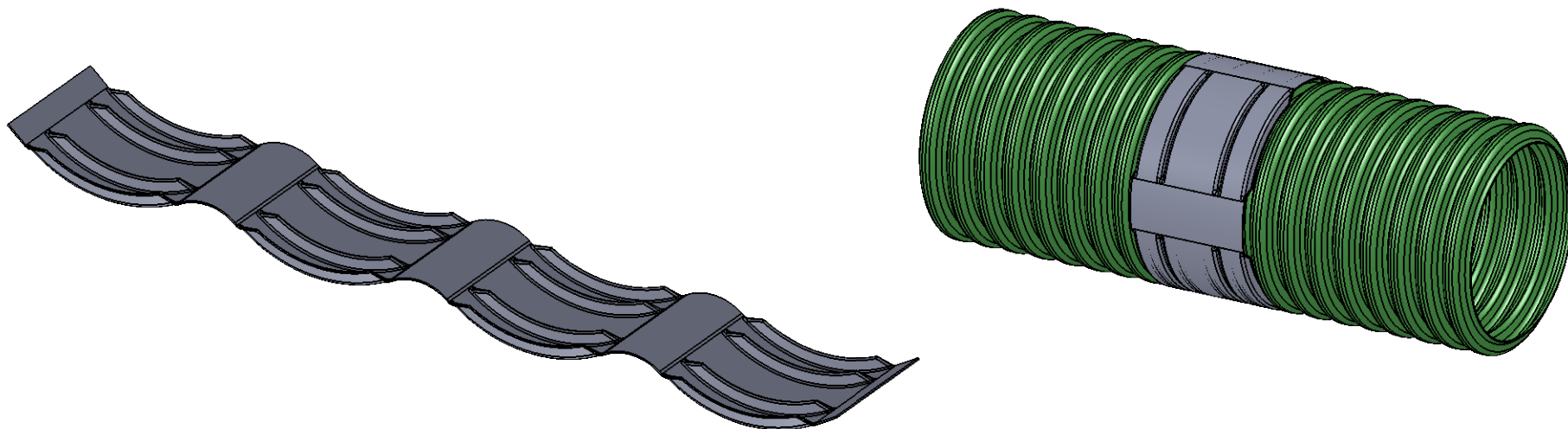
SHEET 4 OF 7

Certificate of quality.

Each parts are designed with **virgin HMWPE black smooth sheets** extruded by Folia Plastics for Qualiplast were produced with either **Formosa Resin HL 5010** or **Novapol NP-Y-353A** and contained **3% carbon black**. All parts are free of defect.

PROPRIETARY AND CONFIDENTIAL

THE INFORMATION CONTAINED IN THIS DRAWING IS THE SOLE PROPERTY OF PLASTIQUE QUALIPLAST. ANY REPRODUCTION IN PART OR AS A WHOLE WITHOUT THE WRITTEN PERMISSION OF PLASTIQUE QUALIPLAST IS PROHIBITED.



Outside Diameter :
Min : 27.7"
Max : 28.7"

Pitch :
Min : 3.7"
Max : 4.2"



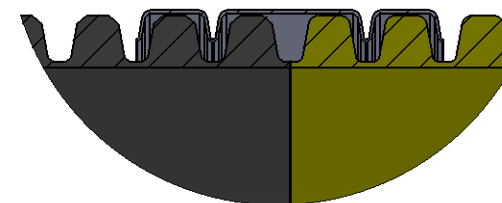
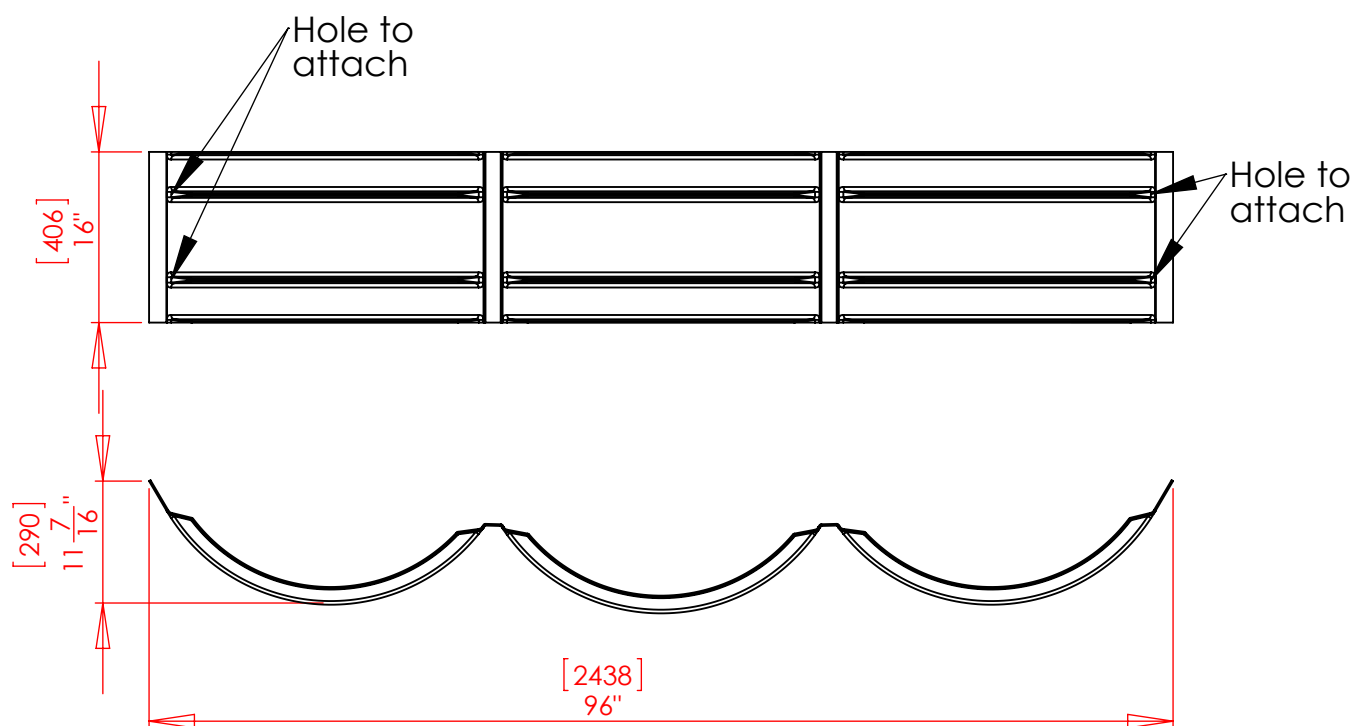
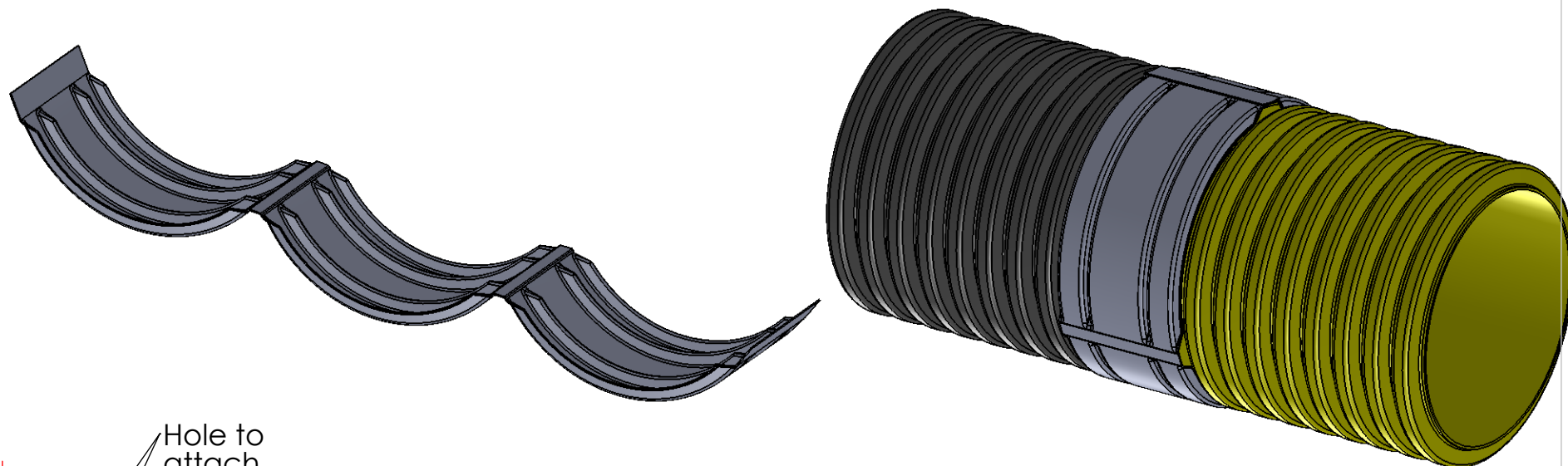
SC-240600-3
24" (600mm)

DRAWN: DENIS NADON
EMPLACEMENT:

DATE DE RÉVISION: 24 février 2015 09:49:30

SCALE: 1:15

PROPRIETARY AND CONFIDENTIAL
THE INFORMATION CONTAINED IN THIS
DRAWING IS THE SOLE PROPERTY OF
PLASTIQUE QUALIPLAST. ANY
REPRODUCTION IN PART OR AS A
WHOLE WITHOUT THE WRITTEN
PERMISSION OF PLASTIQUE QUALIPLAST
IS PROHIBITED.



Outside Diameter :
Min : 34.6"
Max : 35.8"

Pitch :
Min : 3.7"
Max : 4.2"



SC-300750-1
30" (750mm)

DRAWN: DENIS NADON
EMPLACEMENT:

DATE DE RÉVISION: 21 octobre 2014 07:23:37

SCALE: 1:18

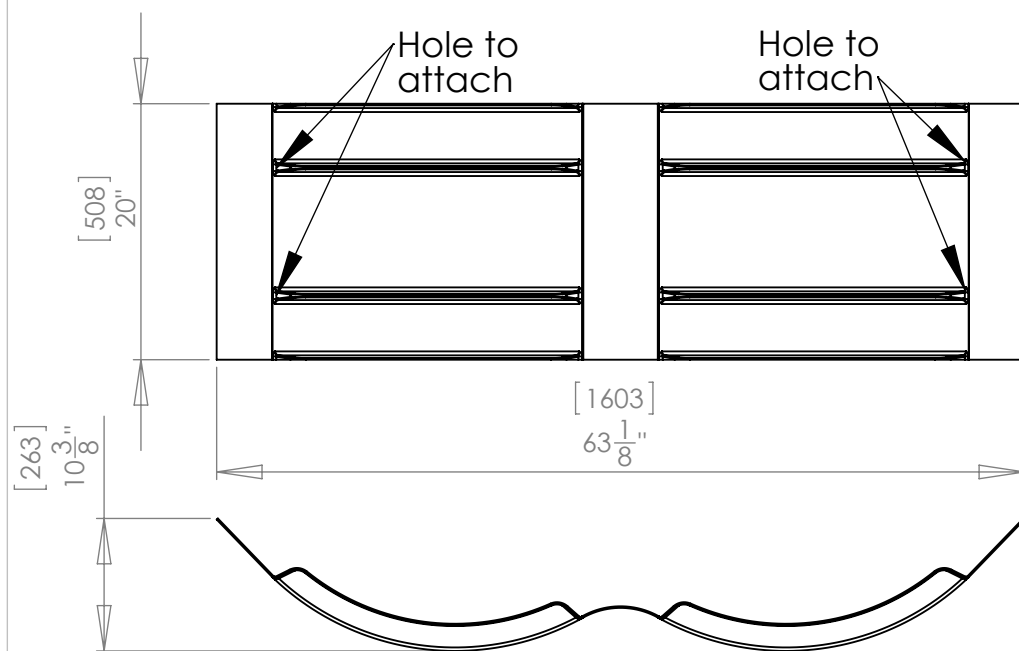
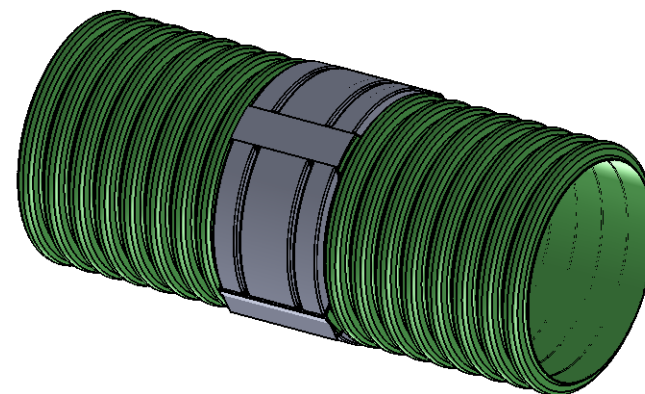
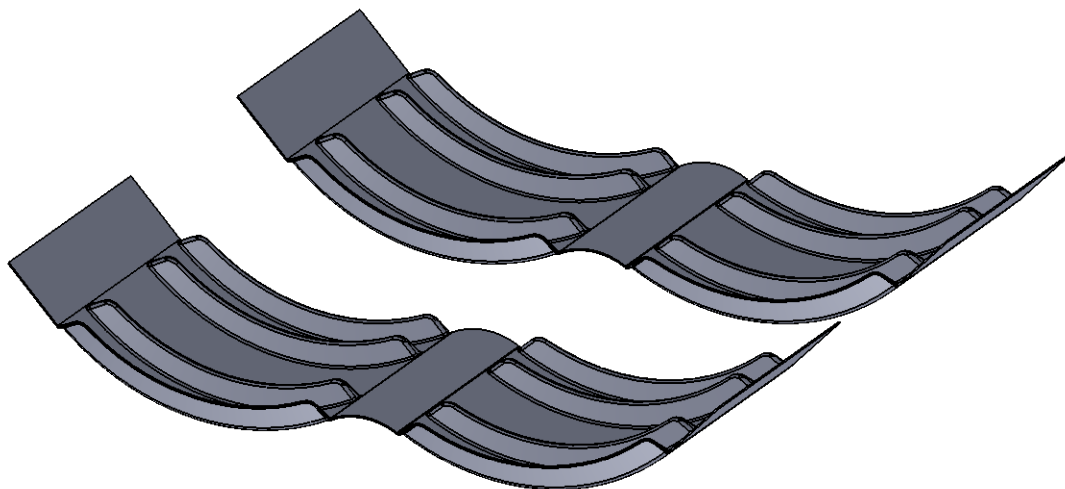
SHEET 3 OF 5

Certificate of quality.

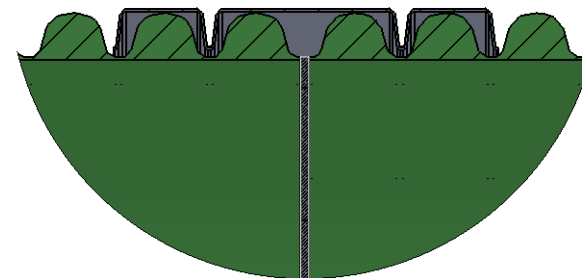
Each parts are designed with **virgin HMWPE black smooth sheets** extruded by Folia Plastics for Qualiplast were produced with either **Formosa Resin HL 5010 or Novapol NP-Y-353A** and contained **3% carbon black**. All parts are free of defect.

PROPRIETARY AND CONFIDENTIAL

THE INFORMATION CONTAINED IN THIS DRAWING IS THE SOLE PROPERTY OF PLASTIQUE QUALIPLAST. ANY REPRODUCTION IN PART OR AS A WHOLE WITHOUT THE WRITTEN PERMISSION OF PLASTIQUE QUALIPLAST IS PROHIBITED.



Westcoast



SC-360900-3
36" (900mm)

DRAWN: DENIS NADON
EMPLACEMENT:

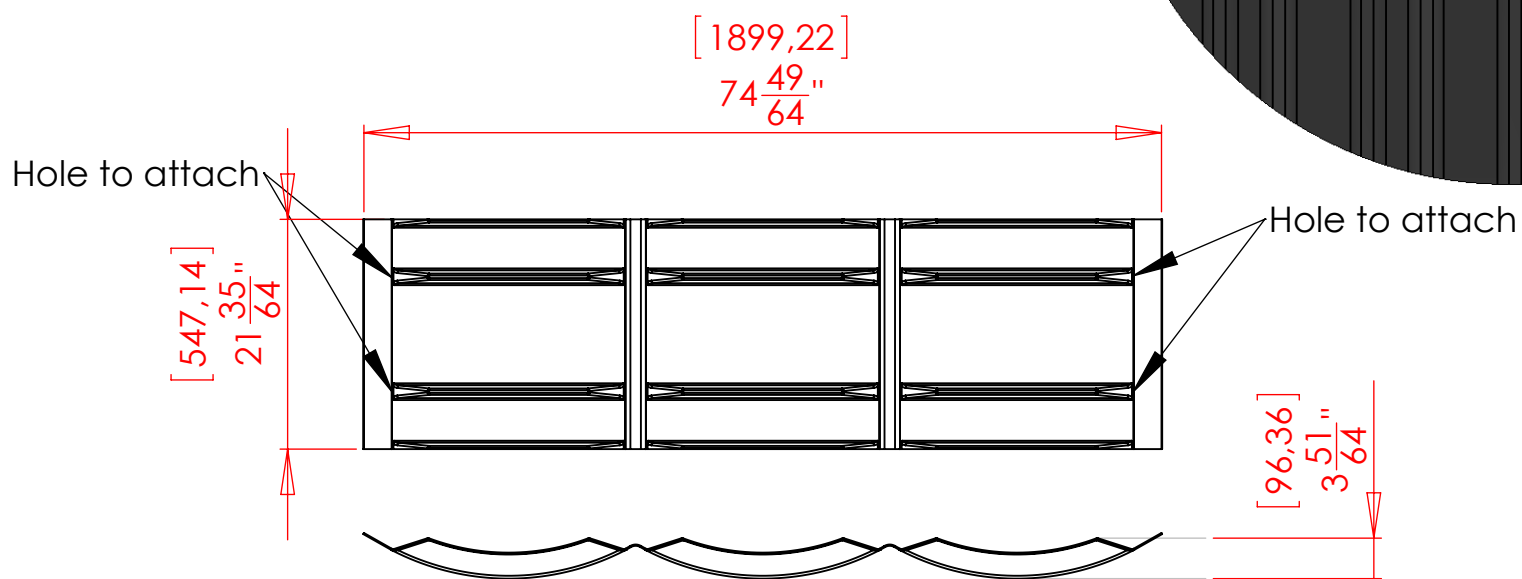
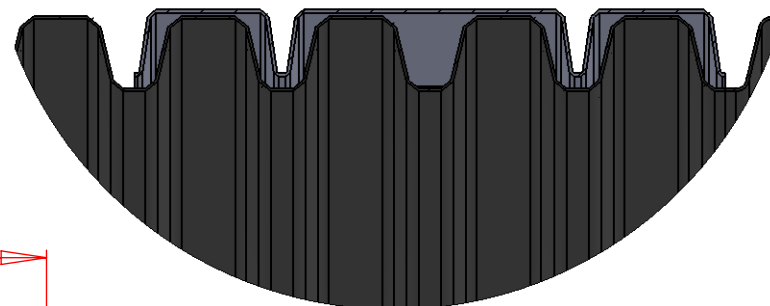
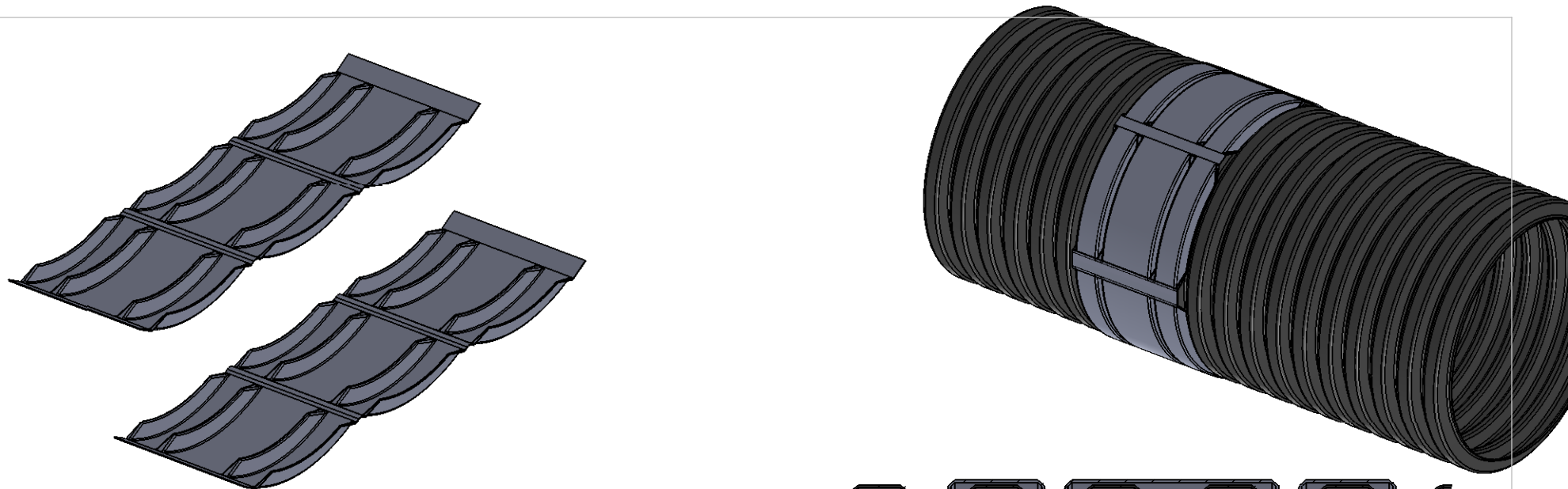
DATE DE RÉVISION: 19 janvier 2015 15:31:53

SCALE: 1:15

SHEET 6 OF 6

PROPRIETARY AND CONFIDENTIAL

THE INFORMATION CONTAINED IN THIS DRAWING IS THE SOLE PROPERTY OF PLASTIQUE QUALIPLAST. ANY REPRODUCTION IN PART OR AS A WHOLE WITHOUT THE WRITTEN PERMISSION OF PLASTIQUE QUALIPLAST IS PROHIBITED.



Pitch :
Min : 4.8"
Max : 5.6"



SC-421050-1
42" (1050mm)

DRAWN: DENIS NADON
EMPLACEMENT:

DATE DE RÉVISION: 25 septembre 2014 08:51:35

SCALE: 1:18

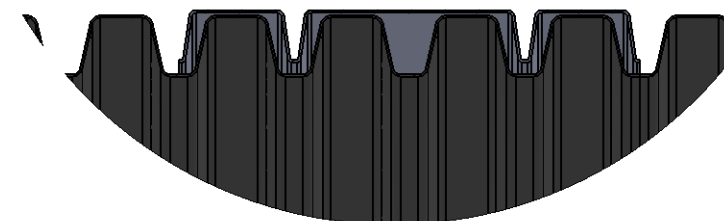
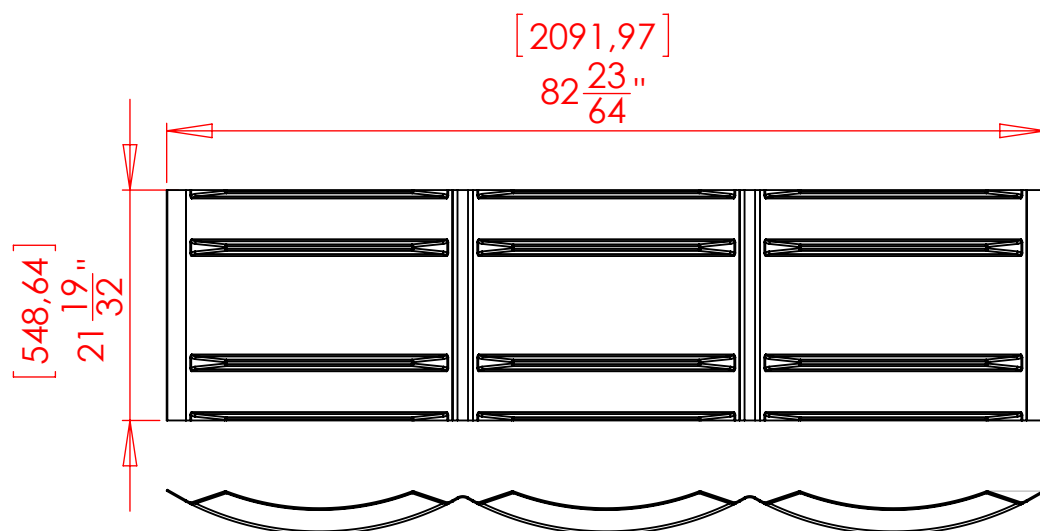
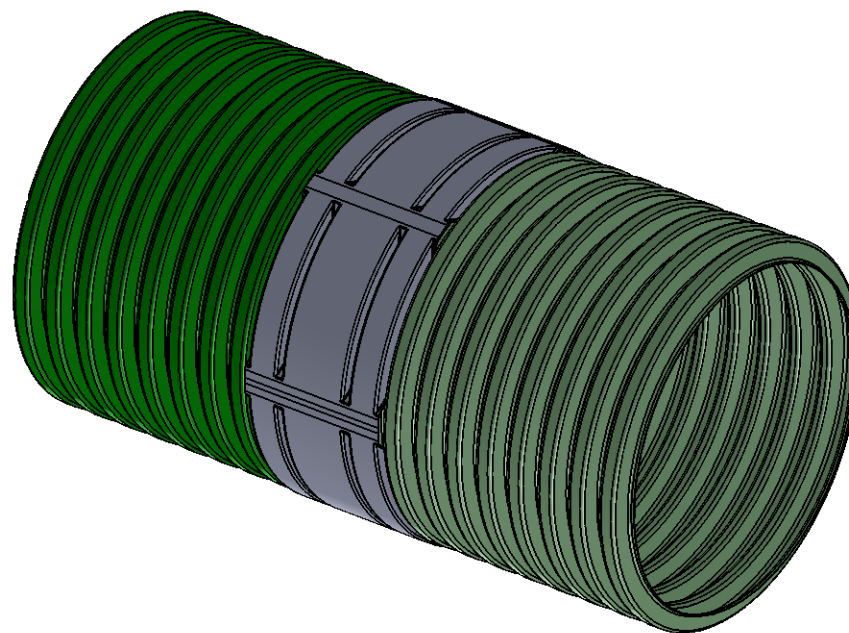
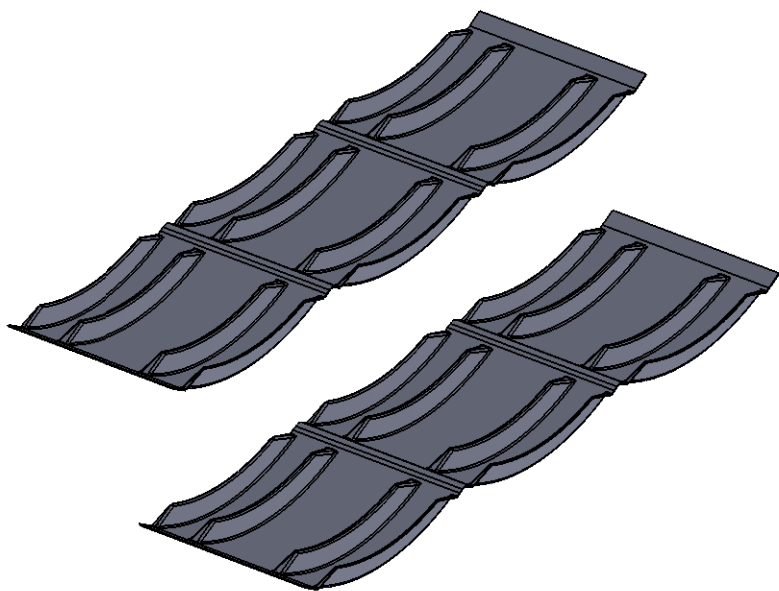
SHEET 2 OF 4

Certificate of quality.

Each parts are designed with **virgin HMWPE black smooth sheets** extruded by Folia Plastics for Qualiplast were produced with either **Formosa Resin HL 5010** or **Novapol NP-Y-353A** and contained **3% carbon black**. All parts are free of defect.

PROPRIETARY AND CONFIDENTIAL

THE INFORMATION CONTAINED IN THIS DRAWING IS THE SOLE PROPERTY OF PLASTIQUE QUALIPLAST. ANY REPRODUCTION IN PART OR AS A WHOLE WITHOUT THE WRITTEN PERMISSION OF PLASTIQUE QUALIPLAST IS PROHIBITED.



[102,50]
4 $\frac{1}{32}$ "

Outside Diameter :
Min : 53"
Max : 55"

Pitch :
Min : 4.8"
Max : 5.6"



SC-481200-1
48" (1200mm)

DRAWN: DENIS NADON
EMPLACEMENT:

DATE DE RÉVISION: 25 septembre 2014 08:53:35

SCALE: 1:18

SHEET 2 OF 4

Certificate of quality.

Each parts are designed with **virgin HMWPE black smooth sheets** extruded by Folia Plastics for Qualiplast were produced with either **Formosa Resin HL 5010 or Novapol NP-Y-353A** and contained **3% carbon black**. All parts are free of defect.

PROPRIETARY AND CONFIDENTIAL

THE INFORMATION CONTAINED IN THIS DRAWING IS THE SOLE PROPERTY OF PLASTIQUE QUALIPLAST. ANY REPRODUCTION IN PART OR AS A WHOLE WITHOUT THE WRITTEN PERMISSION OF PLASTIQUE QUALIPLAST IS PROHIBITED.