



THE HARRINGTON CORPORATION

P.O. BOX 10335 • LYNCHBURG, VIRGINIA 24506 • PHONE: (434) 845-7094
FAX: (434) 845-8562

SPECIFICATION

INJECTION MOLDED POLYETHYLENE DRAINAGE FITTINGS

Fittings for water tight connections to corrugated polyethylene dual wall drainage pipes 4" to 8":

Injection molded polyethylene drainage fittings for use with corrugated polyethylene dual wall drainage pipe of diameters 4" to 8" shall comply with AASHTO M252 and the following additional requirements. Fittings shall have a smooth interior and exterior. The fitting body shall be virgin high density polyethylene with a minimum cell classification of 314420C per ASTM D3350. Carbon black content shall be no less than 2% and no greater than 4%. Gaskets shall be made of thermoplastic vulcanizates (TPV), polyisoprene (SNR), or styrene-butadiene rubber (SBR) complying with ASTM F477. Joints shall be watertight complying with ASTM D3212. Installation shall be per ASTM D2321. Joint lubricant provided by the pipe manufacturer shall be applied to the gasket and inside of the bell prior to joint assembly.

Fittings for soil tight connections to corrugated polyethylene dual wall drainage pipes 4" to 8":

Injection molded polyethylene drainage fittings for use with corrugated polyethylene dual wall drainage pipe of diameters 4" to 8" shall comply with AASHTO M252 and the following additional requirements. Fittings shall have a smooth interior and exterior. The fitting body shall be virgin high density polyethylene with a minimum cell classification of 314420C per ASTM D3350. Carbon black content shall be no less than 2% and no greater than 4%. Fitting bells shall feature four dimples equally spaced about the circumference and inwardly directed to engage the pipe corrugation upon joint assembly. Installation shall be per ASTM D2321.

A

B

C

D

E

F

G

DIMENSIONS IN INCHES

SIZE	A	B	C	L
4"	5.4	8.1	2.3	3.6
6"	7.7	12.5	3.7	5.7
8"	10.4	15.0	4.1	6.6

General

This product sheet applies to both Watertight and Soiltight versions of this fitting for use with corrugated polyethylene dual wall drainage pipe. For Watertight fittings, gaskets are included (not shown). For Soiltight fittings, four dimples (not shown) equally spaced about the circumference of the bells and inwardly directed are formed in the sockets to provide for the pipe connection. No gaskets are required for Soiltight fittings.

Product Standards

AASHTO M252

Material Standards

Fitting Body - Polyethylene compound with minimum cell classification 314420C per ASTM D3350

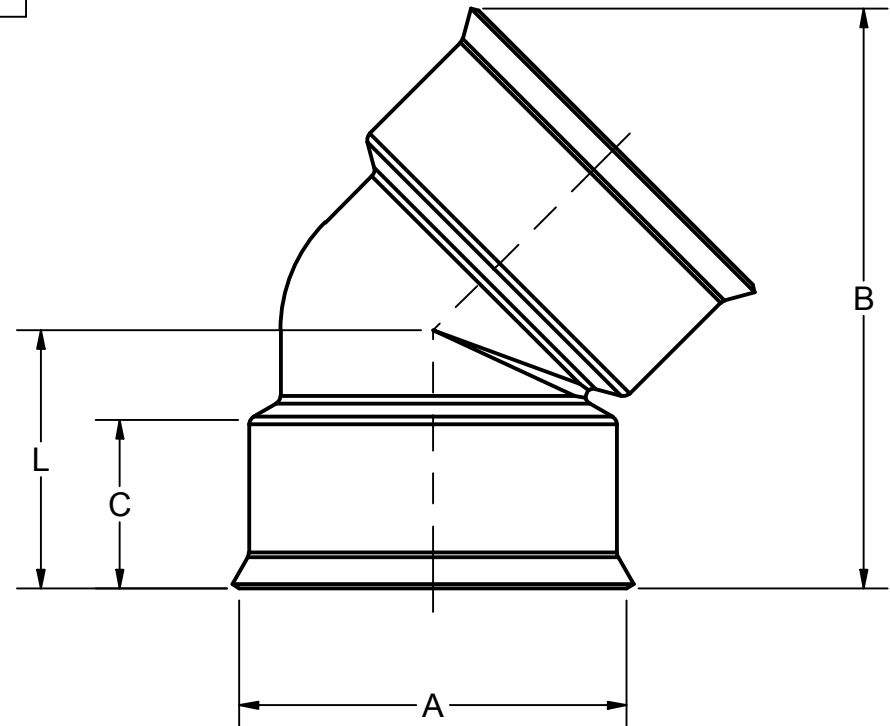
Gaskets (Watertight fittings) - TPV, SNR or SBR per ASTM F477

Performance Standards

Watertight Joint (with Gaskets supplied) - ASTM D3212

Installation

ASTM D2321



EFFECTIVE DATE:

1/7/2020

DRAWING NUMBER:

DRAINAGE 45.idw

DRAWN BY:

SBR



**THE HARRINGTON
CORPORATION**

TITLE:

INJECTION MOLDED 45° BEND, DRAINAGE

A

B

C

D

E

F

G

DIMENSIONS IN INCHES

SIZE	A	B	C	L
4"	5.4	8.0	2.3	5.1
6"	7.7	11.9	3.7	7.9
8"	10.4	15.0	4.1	9.6

General

This product sheet applies to both Watertight and Soiltight versions of this fitting for use with corrugated polyethylene dual wall drainage pipe. For Watertight fittings, gaskets are included (not shown). For Soiltight fittings, four dimples (not shown) equally spaced about the circumference of the bells and inwardly directed are formed in the sockets to provide for the pipe connection. No gaskets are required for Soiltight fittings.

Product Standards

AASHTO M252

Material Standards

Fitting Body - Polyethylene compound with minimum cell classification 314420C per ASTM D3350

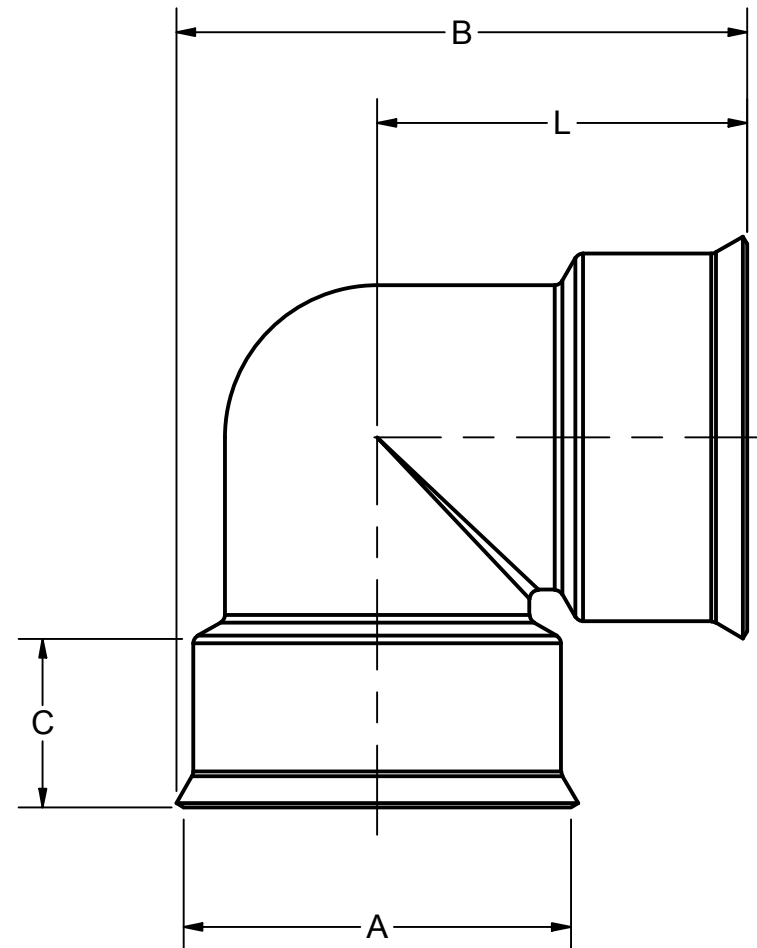
Gaskets (Watertight fittings) - TPV, SNR or SBR per ASTM F477

Performance Standards

Watertight Joint (with Gaskets supplied) - ASTM D3212

Installation

ASTM D2321



EFFECTIVE DATE:	1/7/2020
DRAWING NUMBER:	DRAINAGE 90.idw
DRAWN BY:	SBR



**THE HARRINGTON
CORPORATION**

TITLE:
INJECTION MOLDED 90° BEND, DRAINAGE

A

B

C

D

E

F

G

DIMENSIONS IN INCHES

SIZE	A	B	C	L
4x4	5.4	5.1	2.3	10.3
6x4	7.7	6.3	3.7	15.8
6x6	7.7	7.9	3.7	15.8
8x4	10.4	7.5	4.1	19.2
8x6	10.4	9.1	4.1	19.2
8x8	10.4	9.6	4.1	19.2

General

This product sheet applies to both Watertight and Soiltight versions of this fitting for use with corrugated polyethylene dual wall drainage pipe. For Watertight fittings, gaskets are included (not shown). For Soiltight fittings, four dimples (not shown) equally spaced about the circumference of the bells and inwardly directed are formed in the sockets to provide for the pipe connection. No gaskets are required for Soiltight fittings.

Product Standards

AASHTO M252

Material Standards

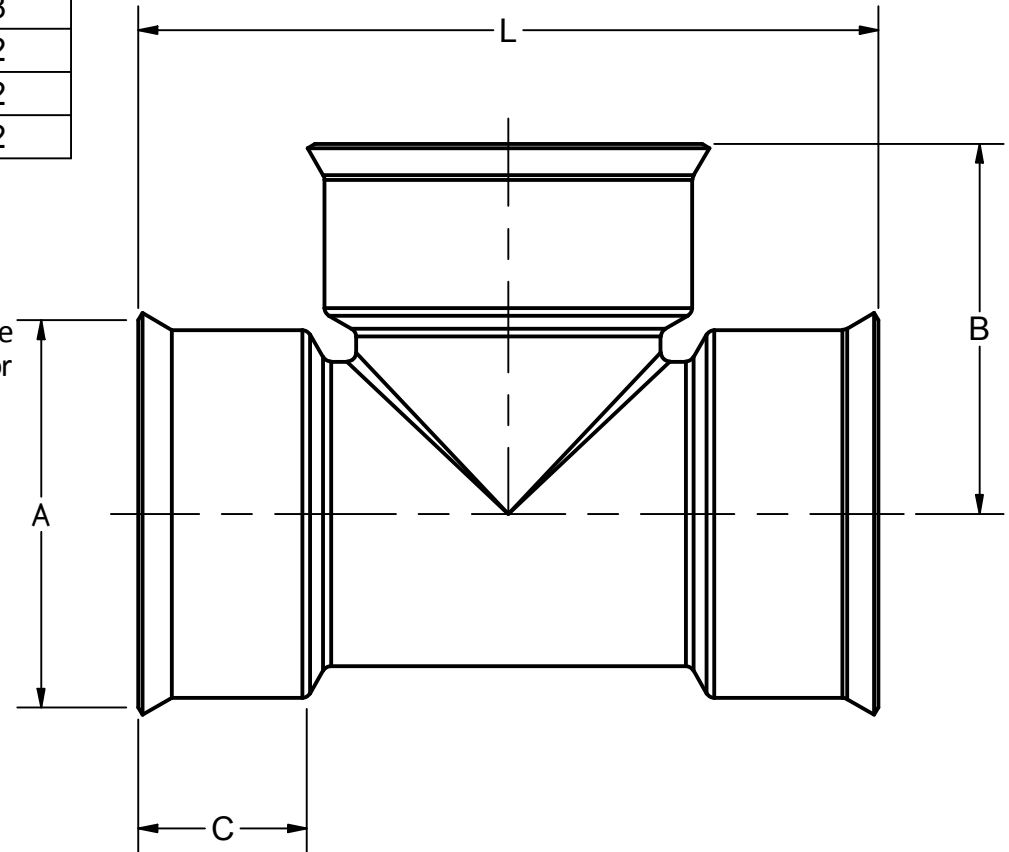
Fitting Body - Polyethylene compound with minimum cell classification 314420C per ASTM D3350
Gaskets (Watertight fittings) - TPV, SNR or SBR per ASTM F477

Performance Standards

Watertight Joint (with Gaskets supplied) - ASTM D3212

Installation

ASTM D2321



EFFECTIVE DATE:

1/21/2020

DRAWING NUMBER:

DRAINAGE TEES.idw

DRAWN BY:

SBR

TITLE:

INJECTION MOLDED TEE, DRAINAGE



**THE HARRINGTON
CORPORATION**

A

B

C

D

E

F

G

DIMENSIONS IN INCHES

SIZE	A	B	C	L
4x4	5.4	9.0	2.3	12.5
6x4	7.7	11.5	3.7	19.0
6x6	7.7	13.5	3.7	19.0
8x4	10.7	13.0	4.1	20.4
8x6	10.7	15.4	4.1	20.4
8x8	10.7	17.0	4.1	23.5

General

This product sheet applies to both Watertight and Soiltight versions of this fitting for use with corrugated polyethylene dual wall drainage pipe. For Watertight fittings, gaskets are included (not shown). For Soiltight fittings, four dimples (not shown) equally spaced about the circumference of the bells and inwardly directed are formed in the sockets to provide for the pipe connection. No gaskets are required for Soiltight fittings.

Product Standards

AASHTO M252

Material Standards

Fitting Body - Polyethylene compound with minimum cell classification 314420C per ASTM D3350

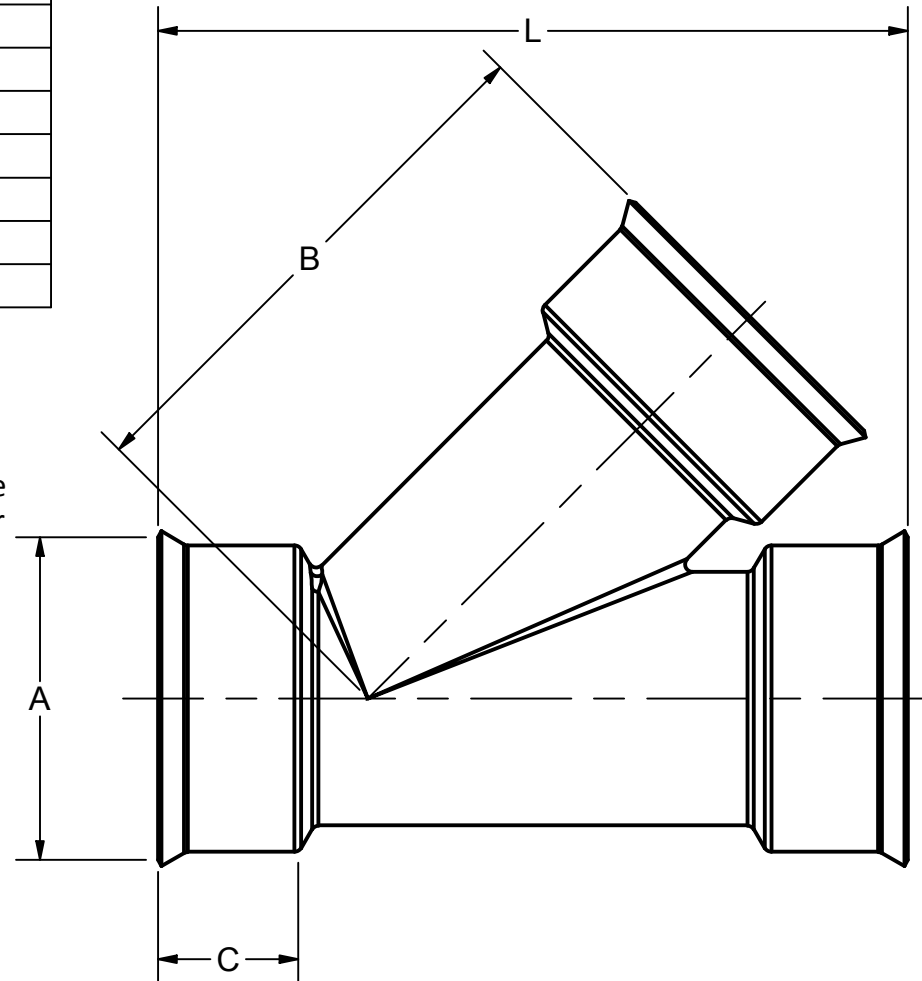
Gaskets (Watertight fittings) - TPV, SNR or SBR per ASTM F477

Performance Standards

Watertight Joint (with Gaskets supplied) - ASTM D3212

Installation

ASTM D2321



EFFECTIVE DATE:

7/27/2020

DRAWING NUMBER:

DRAINAGE WYES.idw

SHEET:

SBR



**THE HARRINGTON
CORPORATION**

TITLE:

INJECTION MOLDED WYE, DRAINAGE