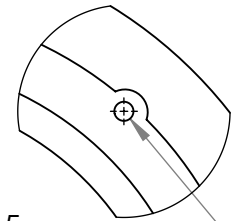
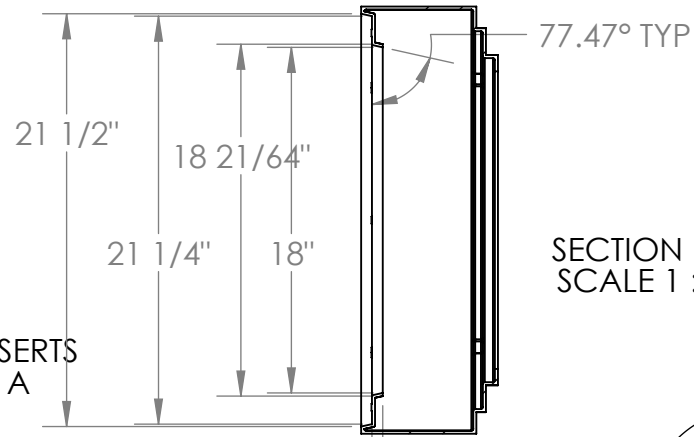


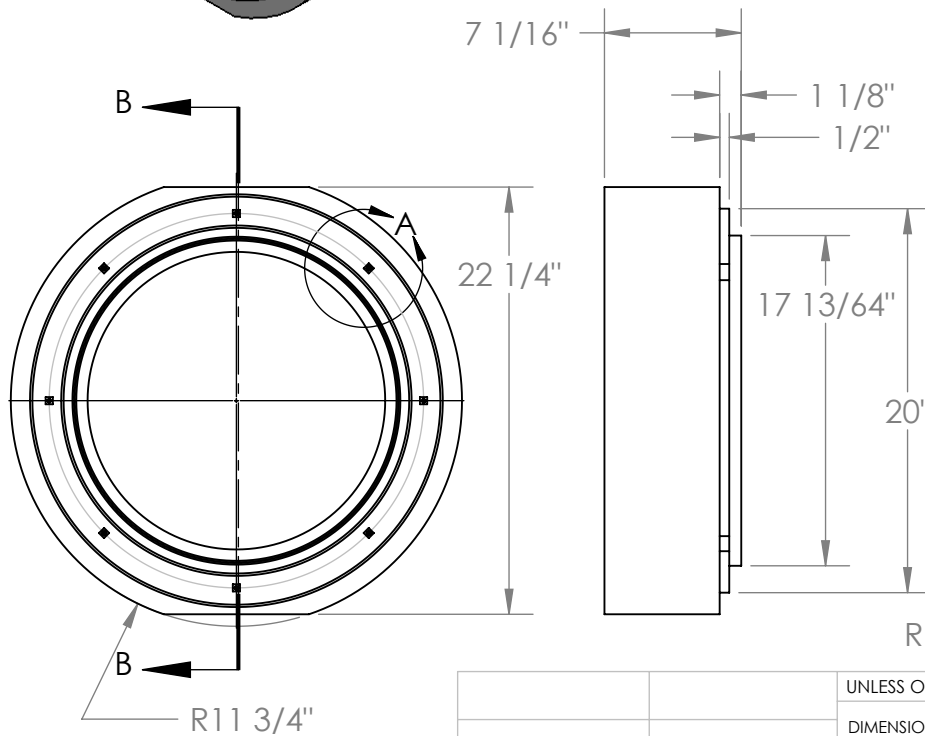
DETAIL A
SCALE 1 : 5

(8) 1/4 - 20 THREAD INSERTS
EQUALLY SPACED ON A
19.500 BOLT CIRCLE.



DETAIL C
SCALE 1 : 5

(4) ϕ 1/2" HOLES ∇ THRU
EQUALLY SPACED ON
A ϕ 19.500 BOLT CIRCLE



MATERIAL DENSITY: .0334 LBS/IN³

PRODUCT WEIGHT: 5.04 LBS

WALL THICKNESS: .160

PROPRIETARY AND CONFIDENTIAL
THE INFORMATION CONTAINED IN THIS
DRAWING IS THE SOLE PROPERTY OF
TOPP INDUSTRIES. ANY REPRODUCTION IN
PART OR AS A WHOLE WITHOUT THE
WRITTEN PERMISSION OF TOPP INDUSTRIES
IS PROHIBITED.

		UNLESS OTHERWISE SPECIFIED:	NAME	DATE
		DIMENSIONS ARE IN INCHES	DRAWN	Corey 9/29/15
		TOLERANCES:	CHECKED	
		FRACTIONAL \pm 1/16	ENG APPR.	
		ANGULAR: MACH \pm BEND \pm	MFG APPR.	
		TWO PLACE DECIMAL \pm 0.015	Q.A.	
		THREE PLACE DECIMAL \pm 0.005	COMMENTS:	
		INTERPRET GEOMETRIC TOLERANCING PER:		
		MATERIAL		
		LLDPE		
		FINISH		
		BLACK		
NEXT ASSY	USED ON			
APPLICATION		DO NOT SCALE DRAWING		

**TOPP INDUSTRIES
INCORPORATED**

TITLE:

**6" POLY BASIN EXTENSION
18 X 6 EXT-1**

SIZE
A

DWG. NO.

B1806 EXT

REV
01

SCALE: 1:12